

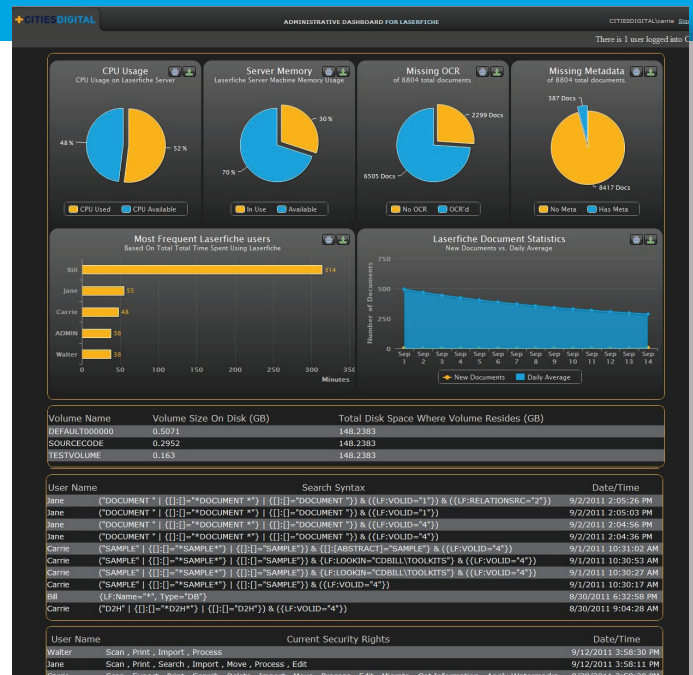
Administrative Dashboard for Laserfiche®

Cities Digital's Administrative Dashboard for Laserfiche gives Laserfiche administrators the ability to view statistics at a glance pertaining to the Laserfiche Server. Centralized graphs and data tables are populated with the most recent information on CPU usage, server memory, documents missing OCR and Metadata – along with most frequent Laserfiche users, the number of documents created, recent searches, and security rights.

Features of the Administrative Dashboard for Laserfiche by Cities Digital include:

- Graphical display of Laserfiche Server information including CPU usage and Laserfiche Server memory.
- Graphical display of document statistics including: number of documents missing OCR, number of documents missing metadata, and the number of documents created.
- Graphical display of the most frequent Laserfiche users.
- Data tables which display the current volume size, recent searches, and current security rights

The dashboard uses High Charts to represent only the most recent data, allowing administrators to easily view the vital information about the Laserfiche Server, users, and document statistics.



Pie charts indicate CPU usage, Laserfiche Server memory, documents with Missing OCR, and documents with Missing Metadata. The bar graph indicates the most frequent Laserfiche users based on minutes spent, and the area-line graph indicates Laserfiche documents created versus the daily average.

Also included are data tables populated with information on Laserfiche Volume size on disk, recent searches including syntax, and changes in security rights.

Contact your Cities Digital Account Representative for more information about Administrative Dashboard for Laserfiche.

ADMIN DASHBOARD LASERFICHE

855-714-2800
sales@citiesdigital.com



Laserfiche® is a trademark of Laserfiche